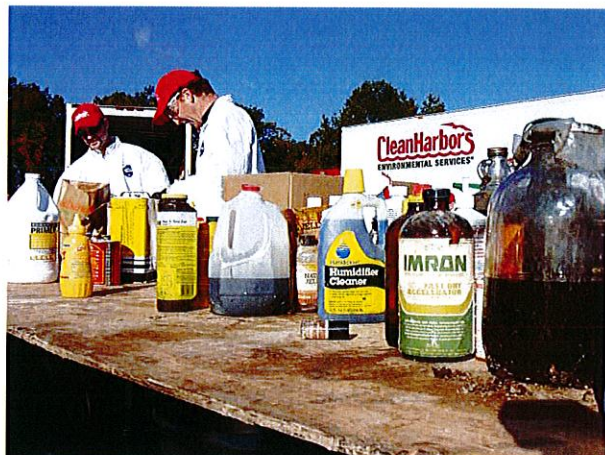


# Household Hazardous Waste Services

## Mobile Household Hazardous Waste Collection Programs Fact Sheet



### Mobile Household Hazardous Waste Collection Programs

Clean Harbors provides mobile household hazardous waste (HHW) collection programs for communities located beyond a defined distance from a permanent collection site. A municipality may consider supplemental collection options such as developing satellite facilities and/or adding a mobile collection unit once a permanent HHW collection facility is established. This type of program is effective in rural or urban settings.

These temporary events require a collection vehicle such as a box truck and trailer to transport the material back to the central permanent site or to the end disposal sites. All equipment, supplies, and waste are removed immediately following the collection event. Mobile collections are an efficient alternative when siting a permanent location is prohibited.



Clean Harbors mobile HHW collection programs provide many advantages including

- Increased participation
- Flexible schedule
- Technical and operations support
- Collection and waste management

**Increased Participation** – These programs allow customers to reach a new sector of the population that may not otherwise travel the distance to the permanent center. Mobile programs are a viable solution for rural or large metropolitan areas.

**Flexible Schedule** – Customers can select the dates and times of event operations based upon their needs.

**Technical and Operations Support** – From waste identification to packaging requirements, to supply and equipment recommendations, our chemists and logistical coordinators are there to answer your questions and provide full technical support to your program. Our program specialists follow the evolving regulatory framework and can alert you of changes in existing regulations and implementation of new regulations as well as provide guidance for compliance.

With our own regulatory affairs department and our technical service specialists, rest assured that your waste will be transported and managed properly, and all services are provided with strict internal regulatory oversight.

**Collection and Waste Management** – Utilizing our extensive network of internal resources for staffing, transportation, and waste management, Clean Harbors provides turnkey services for your mobile collection program.



# Household Hazardous Waste Services

## What Happens to Household Hazardous Waste?

According to the U.S. Environmental Protection Agency, Americans generate 1.6 million tons of Household Hazardous Waste (HHW) per year. The average home can accumulate as much as 100 pounds of HHW in the basement and garage and in storage closets.

Congratulations! You have made the right move in bringing your household hazardous waste (HHW) to your local HHW collection program. Thank you for taking this step in securing a safe and healthy environment for your community. Have you ever wondered what happens to these items once you've dropped them off?

Item	Potential Hazard Properties & Ingredients	Disposal Method
<b>AUTOMOTIVE</b>		
Antifreeze	Toxic- contains ethylene glycol	Recycle
Automotive Batteries	Corrosive- contains sulfuric acid	Recycle
Brake Fluid	Corrosive, Toxic- contains glycols	Destructive Incineration
Gasoline / Fuel	Flammable- contains hydrocarbons	Energy Recovery, used to fuel cement kiln or incinerator
Motor Oil	Combustible- contains petroleum distillates	Recycle
Oil Filters	Combustible- contains petroleum distillates	Recycle
Transmission Fluid	Combustible- contains petroleum distillates	Energy Recovery, used to fuel cement kiln or incinerator
<b>PAINTS / SOLVENTS</b>		
Latex Paint	Toxic- contains resins and pigments	Recycle or Reuse
Oil Based Paint	Flammable- contains hydrocarbons and heavy metals	Energy Recovery, used to fuel cement kiln or incinerator
Paint Stripper / Remover	Flammable, Corrosive- contains methylene chloride, petroleum distillates	Energy Recovery, used to fuel cement kiln or incinerator
Solvent Based Paint Products, Thinners	Flammable- contains petroleum distillates, acetone, toluene, ethanol, methylene chloride	Energy Recovery, used to fuel cement kiln or incinerator
Wood Preservatives	Toxic- contains pentachlorophenol (penta or PCP), creosote, copper, zinc, chromium, arsenic	Destructive Incineration
<b>LAWN &amp; GARDEN</b>		
Ant Spray / Bait	Toxic- contains various poisons	Destructive Incineration
Fertilizers	Toxic or Oxidizing- contains nitrogen, phosphorous, potassium	Destructive Incineration
Fungicides	Toxic- contains various poisons	Destructive Incineration
Pesticides / Herbicides	Toxic- contains various poisons such as diazinon, methyl bromide, paraformaldehyde, atrazine, malathion	Destructive Incineration
Rat / Mouse Poisons	Toxic- contains warfarin, strychnine, bromethalin or other various poisons	Destructive Incineration
<b>HOBBY</b>		
Arts & Crafts Supplies	Flammable- most contain petroleum distillates	Energy Recovery, used to fuel cement kiln or incinerator
Photo Chemicals	Corrosive, Toxic- contains silverhalides, hydroquinone, silver, citric acid, ammonium thiosulfate	Neutralize, discharge to wastewater treatment or Destructive Incineration



Item	Potential Hazard Properties & Ingredients	Disposal Method
<b>CLEANERS</b>		
Bathroom Cleaners	Corrosive, Toxic- contains acidic compounds such as phosphoric acid	Neutralize, discharge to wastewater treatment
Bleach	Corrosive, Oxidizing- contains sodium hypochlorite	Neutralize, discharge to wastewater treatment
Disinfectants	Corrosive, Toxic- contains various ingredients such as ammonium compounds, phenolic compounds, pine Oil	Destructive Incineration
Drain Openers	Corrosive- contains sodium hydroxide	Neutralize, discharge to wastewater treatment
Furniture Polish	Flammable- contains petroleum distillates	Energy Recovery, used to fuel cement kiln or incinerator
Oven Cleaners	Corrosive- contains sodium hydroxide or other corrosive alkalis	Neutralize, discharge to wastewater treatment
<b>HOME &amp; PET</b>		
Adhesives / Glues	Flammable, Toxic- contains cyanoacrylates	Energy Recovery, used to fuel cement kiln or incinerator
Aerosols	Flammable, Toxic- propellants contain volatile organic compounds, and depending on particular type of aerosol product, may contain paints, cleaners or pesticides	Destructive Incineration
Asphalt/Roofing Tar / Sealers	Flammable, Toxic- contains petroleum distillates, asbestos	Destructive Incineration
Electronics	Toxic- contains lead and other heavy metals	Recycle
Flea & Tick Products	Toxic or Corrosive- may contain permethrin, carbaryl, or methorene	Destructive Incineration
Fluorescent Light Tubes	Toxic- contains mercury	Recycle
Household Batteries, Alkaline ("dry cell")	Corrosive- contains potassium hydroxide or sodium hydroxide	Hazardous Waste landfill
Household Batteries, Rechargeable	Corrosive, Toxic- may contain nickel-cadmium, lithium or mercury	Recycle
Lighter Fluid	Flammable- contains hydrocarbons	Energy Recovery, used to fuel cement kiln or incinerator
Medication	Toxic- both over the counter and prescription medications	Destructive Incineration
Mercury Thermometer / Thermostat	Toxic- contains mercury	Recycle
Mothballs	Toxic- contains paradichlorobenzene or naphthalene	Destructive Incineration
Nail Polish Remover	Flammable- contains acetone	Energy Recovery, used to fuel cement kiln or incinerator
Pool Chemicals	Corrosive, Oxidizing, Toxic- includes various chemicals such as chlorinated isocyanurates, lithium hypochlorite, sodium bicarbonate, potassium monopersulfate, hydrogen peroxide, sodium hypochlorite, calcium hypochlorite, and certain ammonium, brominated, copper and silver compounds, and muriatic acid (hydrochloric acid), sodium bisulphate, sodium carbonate	Neutralize, discharge to wastewater treatment or Destructive Incineration
Propane Cylinders	Flammable- contains propane	Recycle

While this list is not comprehensive, it does contain many of the most common household hazardous waste items. When you are not sure if a household product is hazardous, look for these warnings on the label.

**Toxic / Poison** - can cause illness or injury; highly toxic, can be harmful or fatal if swallowed; use only in a well-ventilated area



**Flammable / Combustible** - can be easily ignited, do not use near heat or flame, do not smoke while using this product



**Corrosive** - can burn and destroy living tissue, causes severe burns on contact, can burn eyes, skin, throat



**Danger** - more severely hazardous or toxic; can cause permanent serious health effects (skin burns or stomach ulcers)



**Irritant**- can irritate living tissue



**Caution / Warning** - generally mildly to moderately hazardous or toxic; can cause temporary adverse health effects (skin irritation or vomiting)

