

EFFECTIVE:
16-MAR-11

HORIZONTAL MOTORS

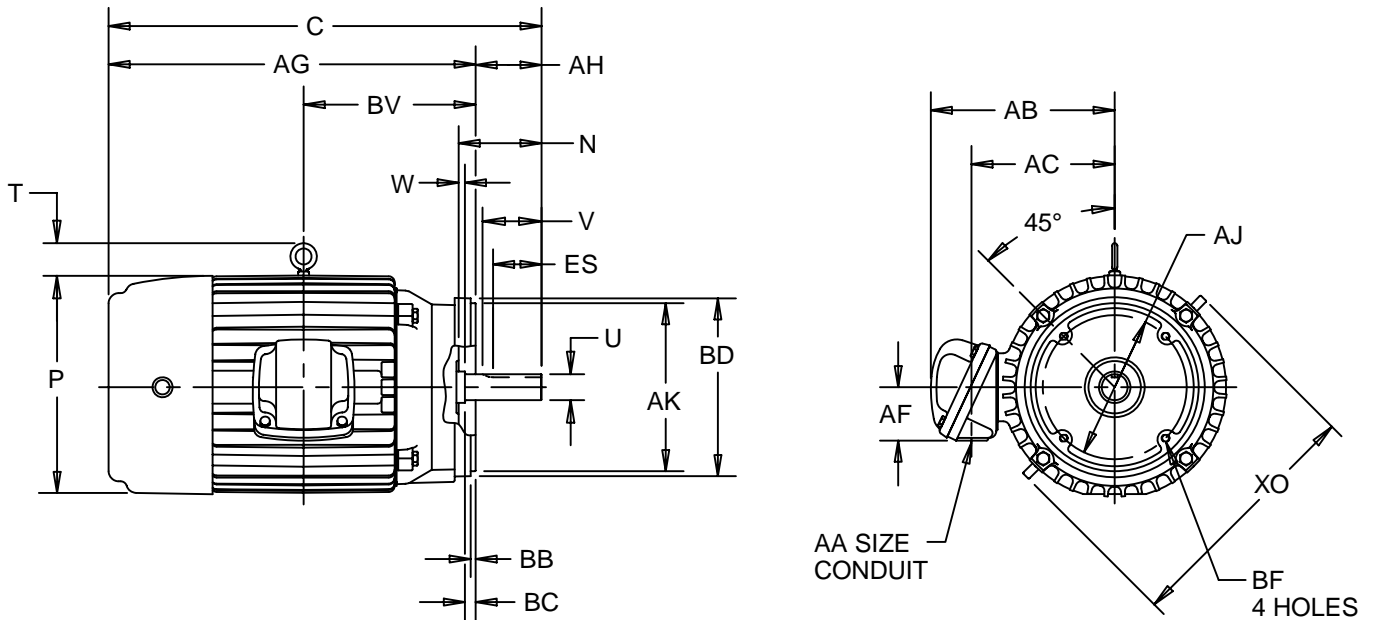
W/ NEMA "C" BRACKET AND CAST IRON CONDUIT BOX

PRINT:
07-2177

SUPERSEDES:
15-JAN-03

FRAME: 182, 184TC
BASIC TYPE: CEF, CTF, TCF

SHEET:
1 OF 1



ALL DIMENSIONS ARE IN INCHES AND MILLIMETERS

UNITS	C	N	P ⁶	T ⁷	U -.0005	V MIN	W	AA	AB	AC	AF	AG
IN	17.44	2.94	9.50	2.06	1.1250	2.63	.19	3/4 NPT	7.88	5.75	2.13	14.81
MM	443	75	241	52	28.575	67	5		200	146	54	376

UNITS	AH	AJ	AK -.003	BB MIN	BC	BD MAX	BF ²	BV	ES MIN	XO	SQ KEY
IN	2.63	7.250	8.500	.25	.13	9.00	1/2-13 X .75	6.25	1.78	12.38	.250
MM	67	184.15	215.90	6	3	229		159	45	314	6.35

TOLERANCES	
FACE RUNOUT	.004 T.I.R.
PERMISSIBLE ECCENTRICITY OF MOUNTING RABBET	.004 T.I.R.
PERMISSIBLE SHAFT RUNOUT	.002 T.I.R.
FOR SPECIAL SHAFT RUNOUT	.001 T.I.R.

- 1: ALL ROUGH DIMENSIONS MAY VARY BY .25" DUE TO CASTING AND/OR FABRICATION VARIATIONS.
- 2: TAP SIZE AND BOLT PENETRATION ALLOWANCE.
- 3: ALL TAPPED HOLES ARE UNIFIED NATIONAL COARSE, RIGHT HAND THREAD.
- 4: TOLERANCE SHOWN ARE IN INCHES ONLY.

- 5: CONDUIT BOX MAY BE LOCATED ON EITHER SIDE OF MOTOR. CONDUIT OPENINGS MAY BE LOCATED IN STEPS OF 90 DEGREES REGARDLESS OF LOCATION. STANDARD AS SHOWN WITH CONDUIT OPENING DOWN.
- 6: LARGEST MOTOR WIDTH.
- 7: THIS UNIT MAY HAVE HORIZONTAL LIFTING, VERTICAL LIFTING OR BOTH.

07-2177/E

Nidec Motor Corporation
St. Louis, Missouri

INFORMATION DISCLOSED ON THIS DOCUMENT IS CONSIDERED PROPRIETARY AND SHALL NOT BE REPRODUCED OR DISCLOSED WITHOUT WRITTEN CONSENT OF NIDEC MOTOR CORPORATION



ISSUED BY
R. KING
APPROVED BY
K. POTTER

IHP_DP_NMCA (MAR-2011) SOLIDEDGE