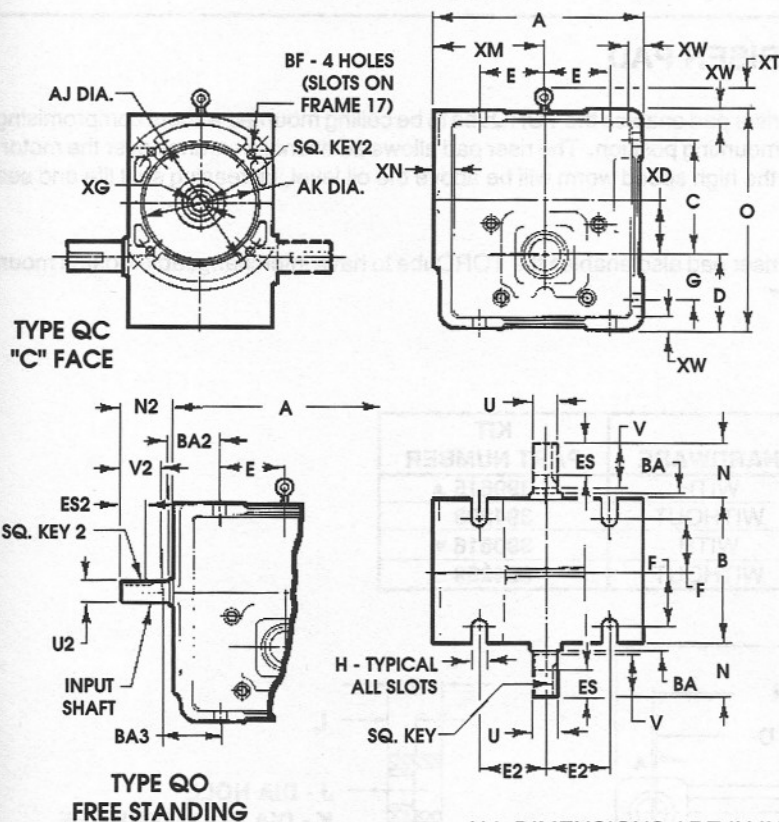


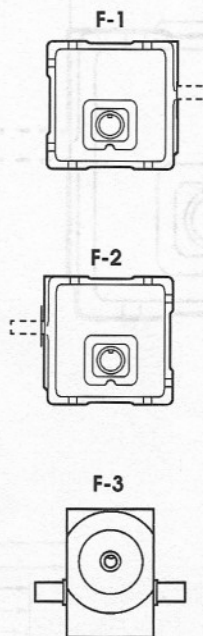
TORQube Dimensions

STANDARD F-1 ASSEMBLY

ASSEMBLY POSITIONS



FOR MOUNTING POSITIONS,
REFER TO PAGE C9



ALL DIMENSIONS ARE IN INCHES

| FRAME | B | C | D | E | E2 | F | G | H | N | O | U | V MIN. | ES MIN. |
|-------|-------|--------|--------|---------|---------|---------|---------|-------|---------|-------|-------|-----------|-------------|
| 17 | 4-3/4 | 3-3/4 | 2-1/2 | 2-1/8 | 2-1/8 | 1-13/16 | 1-1/2 | 7/16 | 2-1/16 | 7-1/4 | 7/8 | 1-29/32 | 5/8 1-21/32 |
| 26 | 5-1/4 | 4-7/16 | 3-9/16 | 2-9/16 | 2-3/4 | 2-1/16 | 2-7/16 | 7/16 | 2-13/16 | 9-1/8 | 1-1/8 | 2-9/16 | 5/8 2-1/4 |
| 37 | 9 | 6-7/16 | 4-3/4 | 3-15/16 | 3-15/16 | 3-11/16 | 2-15/16 | 11/16 | 3-9/16 | 13 | 1-5/8 | 3-13/32 | 7/8 3 |

DIMENSIONS FOR TYPE QO

| FRAME | XD | XT | XW | SQ. KEY | REDUCER FRAME | A | N2 | U2 | V2 MIN. | BA2 | BA3 | ES2 MIN. | SQ. KEY 2 |
|-------|--------|---------|-------|------------|------------------|---------|---------|-----|------------|---------|---------|-------------|--------------|
| 17 | 1-3/4 | - | 3/8 | 3/16 | 17 | 6-15/16 | 1-31/32 | 5/8 | 1-7/8 | 1-21/32 | 1-21/32 | 1-3/8 | 3/16 |
| 26 | 2-9/16 | - | 3/8 | 1/4 | 26 | 8-1/8 | 2-3/8 | 7/8 | 2-1/16 | 1-13/16 | 1-5/8 | 1-7/16 | 3/16 |
| 37 | 3-3/4 | 1-27/32 | 15/32 | 3/8 | 37 | 11-7/8 | 3-1/8 | 1 | 2-13/16 | 2-5/16 | 2-5/16 | 2 | 1/4 |

DIMENSIONS FOR TYPE QC

| REDUCER FRAME | MOTOR FRAME | AK A | ±.001 AJ | XG BF +.0005 | XM | XN | SQ. KEY 2 |
|------------------|----------------|---------|-------------|-----------------|------|-------|--------------|
| 17 | 56 | 6-15/16 | 4-1/2 | 5-7/8 | 7/16 | 5/8 | 3-11/16 |
| 26 | 56 | 8-1/8 | 4-1/2 | 5-7/8 | 7/16 | 5/8 | 4-1/4 |
| | 140 | 8-1/8 | 4-1/2 | 5-7/8 | 7/16 | 7/8 | 4-1/4 |
| 37 | 56 | 12-5/16 | 4-1/2 | 5-7/8 | 7/16 | 5/8 | 6-11/32 |
| | 140 | 12-5/16 | 4-1/2 | 5-7/8 | 7/16 | 7/8 | 6-11/32 |
| | 180 | 11-7/8 | 8-1/2 | 7-1/4 | 9/16 | 1-1/8 | 5-29/32 |

TOLERANCES FOR TYPE QC

| | |
|---|-------------|
| Face runout | .004 F.I.R. |
| Permissible eccentricity of mounting rabbet | .004 F.I.R. |
| Permissible shaft runout | .002 F.I.R. |

TQB

All rough casting dimensions may vary by 1/4" due to casting variations.

Dimension "D" will never be exceeded, but may be less than values shown. When exact dimensions are required, shims up to 1/16" may be necessary.

Shaft diameter dimension tolerances: +.0000"; -.0005" up to 1-1/2" inclusive. Larger diameters: +.000"; -.001".



U.S. ELECTRICAL MOTORS

DIVISION OF EMERSON ELECTRIC CO.

