

MUSEUM ACTIVITIES.....Fall & Winter 2010



A Civil War replica cannon was delivered to the Museum by Dan Williams and his sons, Matt (left) and John (rear) in December 2010. The cannon is the central focus of the upcoming Civil War exhibit set for opening in September, 2011.



Marvin Schelhouse and civil war soldier report for duty preparing for the new civil war exhibit in the main gallery.

The new exhibit, planned for September 2011, will highlight the contributions of Delaware, and Milford soldiers, to the Civil War conflict.



The Museum's historic marker gets a new coat of paint by Dr. Robert B. Vincelette of Houston.

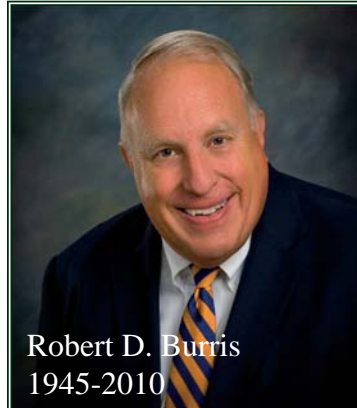


Vietnam Mailbag author Nancy Lynch presents a copy of her recent book that will serve as the basis for February, 2011, book signing and slide show at the Museum. Nancy and Vietnam War veteran Rick Lovekin will provide a 40-minute presentation on Delaware veteran's involvement in the conflict from 1960 - 1975.



Jack Moore and Bob Voshell tour the Rock & Roll Exhibit in May, 2010. Jack played guitar in 1958 with bands in Milford and Felton.

In Memoriam



Robert D. Burris
1945-2010

Bob, Burris, President of Burris Logistics, Inc., and long-time philanthropist for all causes related to his church and Milford, died after a year long battle with cancer. Bob was an inspiration and positive force in Milford. His family contributions were instrumental in the Gen. Torbert statue project completed in 2008. His family was his central focus in life and his son, Donnell, will follow as leader at Burris Logistics. Bob's funeral at Eagle's Nest was the largest funeral service, attended by hundreds of friends, in recent memory.

MILFORD MUSEUM
Phone: 302-424-1080 Fax: 302-424-1080
10:00 a.m. -4:30 p.m. Tuesday-Friday Daily
Sat. & Sun.-2:00 p.m-4:00 or by appointment
Barbara Jones-Museum Secretary
Dave Kenton-Chairman- 745-7600
Dave.kenton@svn.com-EMAIL

dbf DAVIS BOWEN & FRIEDEL, INC.
ARCHITECTS • ENGINEERS • SURVEYORS

Printing Services Provided By:

Milford, Delaware 302-424-1441
Salisbury, Maryland 410-543-9091
Easton, Maryland 410-770-4744



CHALLENGE GRANT LAUNCH 2011

The Milford Museum Commission launched its 2011 "Challenge Campaign" fundraising drive during the annual Christmas party held Sunday, December 5th at the museum. Committee chairperson, Dave Kenton, outlined details of the three-year campaign that is targeted to fund an executive director position for the museum beginning in September, 2011. Commissioner Claudia Leister spoke about our vision for the future of the Milford Museum.

Bob Voshell, Charles Hammond, Al Lauckner, Dave Kenton, Bill Brereton and Joan Lofland will lead the fundraising committee to seek support from patrons in Milford and surrounding communities. A goal has been set to raise \$32,000 annually for the next three years. This money will enable the museum to hire an executive director to provide professional guidance to the museum's operations. Some of their duties will include working with docents to provide daily and weekend access to the museum, curate and organize the collections, schedule exhibits and programs, and seek additional grant funding.

Richard Johnson, local businessman and philanthropist, pledged \$12,500 annually to be used as matching funds for the fundraising challenge. We greatly appreciate his interest and support of our efforts to move the Milford Museum to a professional level and raise its community impact. Visits to patrons will begin in January, 2011 with continuing special events.



CHALLENGE GRANT FUNDRAISING COMMITTEE



Richard Johnson addresses Museum Christmas party visitors to explain his support for a \$12,500 per year grant for three years to provide a challenge for museum fundraising.



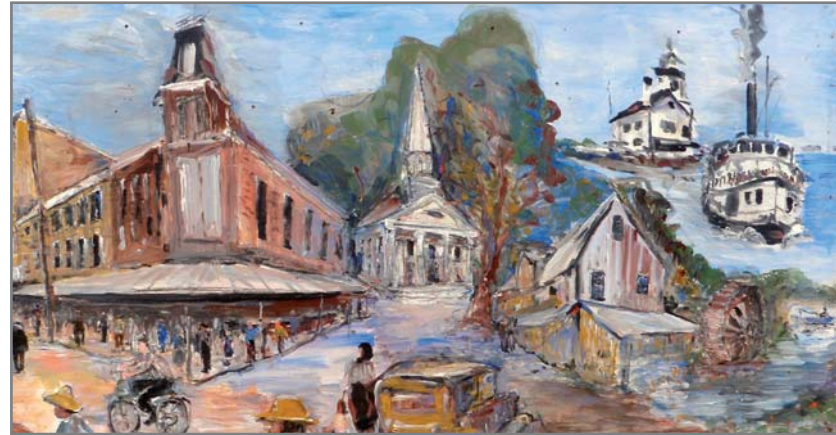
Claudia Leister, Fundraising Chairperson, and Dave Kenton outline plans for \$32,000 goal for an executive director position to be filled in September, 2011.

Fundraising Committee for Museum Campaign

From Left: Richard Johnson, Bill Brereton, Charles Hammond, Robert Voshell, Joan Lofland, Claudia Leister, Don Abrutyn, Marvin Schelhouse, Al Lauckner & Dave Kenton.

Fundraising visits to be started in January, 2011.

Jack Lewis Murals Moved to New Location



Milford Public Library Board members inspect the Jack Lewis mural paintings recently removed from Second Street Player's theater in Milford. Richard Johnson, Library Board Chairman, Dave Burton, Dr. Richard Crabb, Dot Furnish and board members inspect the condition of historic murals painted in 1992 by Delaware artist, Jack Lewis. Four panels depict scenes from Milford's early history. The Library has agreed to provide a new home for the mural in the hallway leading to public meeting rooms in the new section of the Library. Library architect and State of Delaware curator are making plans for a new interior display frame that will preserve the historic mural for future generations of Milfordians.

MISPILLION ART LEAGUE RECEPTION - July 2010



Sharon Depford, President of the Mispillion Art League, thanks mural artists for their talents and dedicated efforts on the murals.



Country Life Homes -Mural Sponsor Dave Hitchens & Mike Fannin.

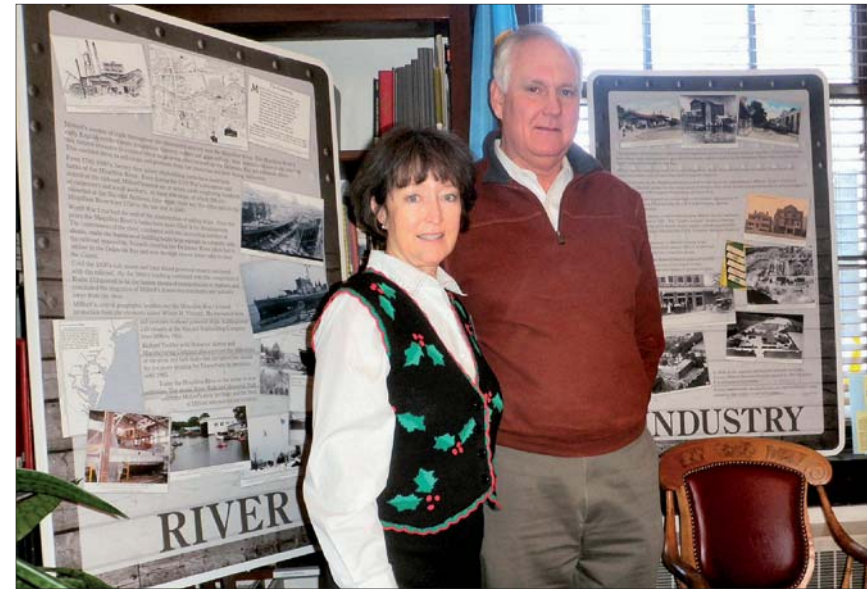


Joe Lear—Milford Community Band Leader at Art League party—2010



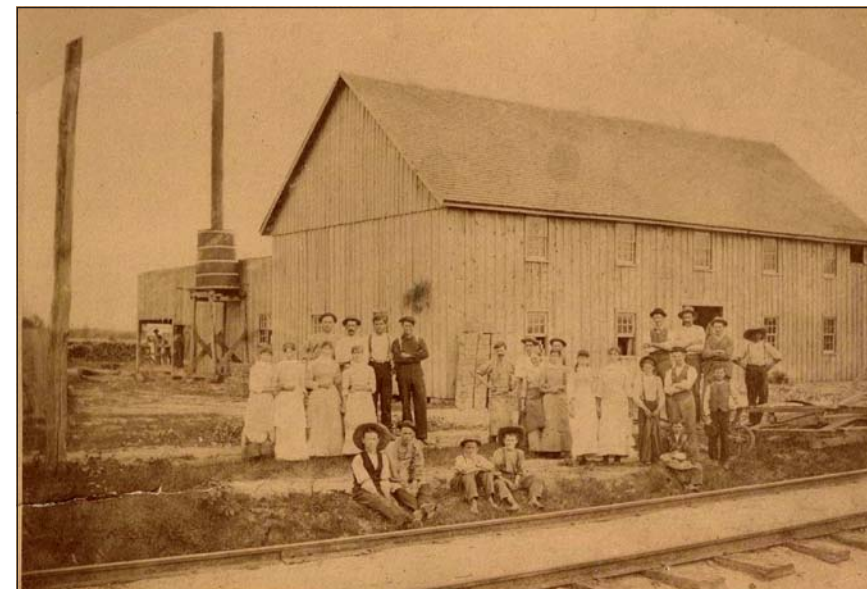
The Salvation Army wall murals painted by the Mispillion Art League artists. From Left: Pea Wagons - 1905; Ship Launch - 1900; Nickelodeon Theater - 1910; Old Red Mill & Caulk Offices - 1905; Old Calvary Methodist Church - 1912.

Delaware Maritime Hall of Fame Induction Ceremony



J. Sudler & Joan Lofland were primarily responsible for the development of the exhibit shown chronicling Milford's shipbuilding past and contribution to Milford's growth. They were also instrumental in the production of a video documentary entitled "Wood Shavings to Metal Sparks" that is available for purchase at the Museum. A contributing grant was sponsored by the Delaware Humanities Forum for the DVD documentary.

On October 9, 2010, J. Sudler Lofland was inducted into the Delaware Maritime Hall of Fame at a ceremony and dinner hosted by the Lewes Yacht Club. Lofland was inducted along with Capt. Wilson Vinyard, represented by his grandson, Col. Curtis Esposito. The Lofland's have been generous supporters of the Milford Museum and its programs. Joan Lofland is currently serving a term as commissioner on the museum board.



MILFORD CANNING FACTORY - CIRCA 1890

In 2010 the Milford Museum was fortunate to receive three Grants from the Delaware Humanities Forum. One was for the creation of the video "Wood Shavings to Hot Sparks", the second one was for the traveling exhibit on the shipbuilding industry in Milford, and the third was to digitize all of the photographs in the collections. This picture is just one of the over 500 photographs that have already been scanned. They are also being cataloged and entered into our PastPerfect collections management computer program.



DELAWARE HISTORIANS

Elaine Townsend Dickerson and Hazel Brittingham Lewes have both served their respective communities for more than 50 years each. Elaine wrote "In the Air Force" and "Blue Hen Beat" from 1953-2003. Hazel was the author of most of the early accounts of Lewes history. Photo at Maritime Hall of Fame dinner and reception.